



UP THE HOLLER

Newsletter of Division 9 THE COAL DIVISION

MID CENTRAL REGION NMRA INC

December 2017



DIVISION OFFICERS

Superintendent
Dan Mulhearn
304-466-9188
super@coalddivision.org

Assistant Superintendent
Robert Osburn
asstsuper@coalddivision.org

Clerk- Jerry Doyle
304-638-2826
clerk@coalddivision.org

COMMITTEE CHAIRS

Achievement Program Chairmen
Ed Keith MMR
740-867-5264
Bob Weinheimer MMR
304-343-1428
ap@coalddivision.org

Clinic
Robert Osburn
clinic@coalddivision.org

Contest
Larry Richards

Education
Vacant

Election
Bill Wadsworth
304-768-3266
nominating@coalddivision.org

Membership
John Harris
membership@coalddivision.org

Raffle
Tom Harris
raffle@coalddivision.org

DIVISION STAFF

Editor
Bob Weinheimer MMR
editor@coalddivision.org

Webmaster
Bob Weinheimer MMR
webmaster@coalddivision.org

FROM THE HEAD OF THE HOLLER

Dan Mulhearn, Superintendent

Here in this part of West Virginia we have had what amounts to a holiday in the first day of firearm deer season on Monday. Then tomorrow we have Thanksgiving. At this time of year we take stock of our blessings in thankful gratitude, especially for family and friends. In that spirit I offer to you and yours my best wishes for a very happy Thanksgiving.

Have you seen all the great pictures of the Clinchfield Santa Train on social media over the past three days? It looks like our Anthony Parrish scored some good shots. Hats off to the people at CSX Huntington shops for the beautifully done Clinchfield paint schemes. A great tradition continues.

Thank you to those members who were able to attend the Bluefield Train Show, we had about 1,200 visitors and appreciate your support. I was able to pick up several, well OK, a lot, of items to put under my Christmas tree thanks to the good dealers at the show. This is the time of year when the juices really start to flow for me when it comes to model railroading. I have to replace a bunch of ceiling tiles in the basement which were damaged in one of the four accidental floods we had last year. I was shoving things around trying to keep the dripping water off books and other valuables. Now I have to clean and organize and I will finally get back to the bench work on the Clinch Valley subdivision.

Last weekend I got to operate on two great model railroads in addition to being at Bob Weinheimer's op session earlier in the month. This past Friday did my usual job as the east end yard switcher at Bob Burke's Southern and Sandy Creek at Appomattox VA. The east end job makes up full trains, of cuts to be picked up by passing through trains. The cars are supplied by the west end job which breaks up terminating trains and sorts cuts dropped by through trains. Other jobs done by my east end yard job are hostling the engine terminal and lining the route for trains arriving from east staging. Then on Saturday I got to run on Tom Harris' Lakeside Lines. I am the operator at CJ tower which is located at Chesapeake Junction. CJ controls all the signals, turnouts, and traffic on the visible portion of the railroad which includes 5 interlockings. Working with the dispatcher in the staging yard, I line the route for whichever train is being dispatched. There are cameras behind the fairing above the layout and the CJ operator can see the train as it passes through each interlocking. I have the ability to manually set the signals to clear, approach, or approach diverging. Then when I see the train has passed the signal I manually drop it to stop indication. I plan on putting some pictures on Facebook,, or maybe later in this publication.

Every one enjoy your turkey.

From the Office Down the Hall

Bob Osburn Assistant Superintendent

Recently I was showing my wife (a retired Educator) the progress being made on my square foot diorama and explained how Larry Richards had put together the program for Division 9. She commented, "Looks like a Growth Mindset project." I guess she recognized the blank look on my face and explained the differences between a Growth Mindset vs. a Fixed Mindset.

In a Fixed Mindset intelligence is static. This leads to a desire to look smart and therefore a tendency to avoid challenges, give up easily due to obstacles, see effort as fruitless, ignore useful feedback, and be threatened by other's success. In a Growth Mindset intelligence can be developed which leads to a desire to learn and therefore a tendency to embrace challenges, persist despite obstacles, see effort as a path to mastery, learn from criticism, and be inspired by other's success. Changing a Student or Teacher's Fixed Mindset to a Growth Mindset is a relative new concept in teaching but the advantages can readily be recognized and remember we are never too old to learn.

From her explanation, it got me thinking about what other areas within Division 9 that we are promoting to encourage Growth Mindset to our members. The MADD Program, Monthly Contest, the Division Library, our Field Trips, and Clinics all certainly fall into a category as being Growth Mindset concepts.

As members of Division, we all have certain abilities as modelers and railroad historians (whether it be scenery, buildings, rolling stock, volunteering, etc.) we feel proficient or comfortable in. When it comes to areas we don't have that same confidence level in we tend to shy away from and put out Fixed Mindset into play.

The NMRA Achievement Program is an excellent example of a way to defeat this Fixed Mindset. Let's take the requirements for Structures as an example:

When you think of "structures" don't just think of buildings and bridges. Structures are just about anything on the layout that was man made and doesn't fit into one of the other Master Builder categories.

To qualify for the Master Builder - Structures certificate:

- You must construct twelve scale structures:
- At least six different types of structures must be represented in the total.
- One of the six types must be a bridge or trestle.

- At least six of the models must be scratch built.
- The remaining six, if not scratch built, must be super detailed with scratch built or commercial parts (for extra points).
- You must earn a score of at least 87-1/2 points on six of the twelve models in either an NMRA sponsored contest or in AP Merit Award judging.

Note that only six of the twelve must earn 87-1/2 points. The others don't even have to be judged! They do all have to be described on the Statement of Qualification (SOQ).

You must submit a Statement of Qualification which includes the following:

- An attachment giving a detailed description of each of the twelve models, including:
- Identification of all scratch built features
- All commercial components used
- Materials used in building the model
- A notation that the model is operational, if it is intended to be
- If the model is a kit, whose kit is it?

Verification of the Merit Awards (photocopies of the certificates or signed Judging Forms). Photos of the model are helpful, though not required.

Your twelve structures do not all have to be of the same scale or era, or on the same layout. In fact, in most cases, it's better to build the structure separately, have it judged (either in a contest or in separate Merit Judging), and then install it in its final location. In this way, the judges can get a better look at it.

Do the requirements seem somewhat challenging, maybe you'll have some obstacles encountered along the way, will you become a little more masterful at building structures, can you learn from a little constructive criticism during judging, and can you be inspired by others who have achieved their Master Builder Structures certificate? These questions all seem to fulfill the definition of Growth Mindset. Why not give the Achievement Program a chance to develop your modeling and personal growth.

Mid Central Region Facebook Page

With the help of Matt Goodman of the Buckeye Division and Christina Ganzer Zambri, NMRA Marketing Consultant, the Mid Central Region launched a Facebook page in early August. The goal is to share with the rest of the Region the activities of the various Divisions. Newsletter availability will be posted as well as promotion for train shows sponsored by the Divisions. Click [here](#) to see the page if you are already a Facebook member.



Coal Division
Monthly Railfun Event
“A Square Foot of Foam”

Saturday December 9, 2017

- 1:00 - Depot open
 Set up and view the Square Foot of Foam entries
 Buy raffle tickets, etc.
 Socialize
- 2:00 - Superintendent's Briefing
- 2:30 - MADD Discussion
- 3:30 - Raffle Results

NEWSLETTER DEADLINES

The goal of the newsletter team is to have this document reach you by email or snail mail at least one week prior to our meetings. We typically start the layout work the Monday 12 days before the meeting. This allows a day of review by the officers and a proofreader before the electronic version is issued, usually on Wednesday. The paper version is mailed Thursday or Friday. For this to happen reliably, we need all items for publication by that

Monday 12 days prior to the meeting. If we don't get it on time we can't print it. Please help us give you the most up to date information possible. Here are the deadlines for the next few issues

January	January 1
February	January 29
March	February 26
April	April 2

NMRA MCR DIVISION 9 *THE COAL DIVISION*

Bluefield, WV
November 11, 2017
Minutes

Meeting called to order at 2:00 pm.

Contest Chair – No report

Minutes of the previous meeting were approved as written in the newsletter.

Raffle Chair – No report

Treasurer's Report – No report as clerk was absent.

Old Business – None

Superintendent Report – Asked the members to let him know of any agenda items.

New Business – It was discussed, voted on, and approved to elect Gary Burdette to the title of Superintendent Emeritus.

MCR President Bob Weinheimer reported that the region now has 12 Divisions. Division 12 contains a part of NW PA and the far west portion of New York. He also noted the region convention will be next May.

Announcements – There will be a train show in Huntington during the weekend after Thanksgiving. Another train show will be at Coonskin Park in Charleston on Feb. 17 & 18, 2018.

Assistant Superintendent's Report – Bob Osburn reminded the members about the square foot diorama challenge that was given out at the October meeting. He would like to see as many as possible participate in the project, which is due at the December meeting. It was also suggested to have Christmas cookies or other goodies brought to the December meeting, to help celebrate the season.

Next Meeting – St. Albans Depot – Dec. 9, 2017, contest will be Square Foot of Foam entries.

The meeting was adjourned at 2:21 pm

Program – NRHS Model Train Show

Membership Chair – No report

Respectfully submitted by Bill Wadsworth, Acting Clerk

Upcoming Clinics Bob Osburn, Clinic Manager

I have been getting a lot of positive feedback from members who are working on their square foot diorama. Those who chose to will have an opportunity to display and discuss their creations; this will be a combination Clinic and MADD Program event for the December Meeting.

Mark Maynard has agreed to present the Clinic for January—Car Repair 101. He will also be displaying and explaining some rolling stock he has modified for track cleaning.

David Oliverio will present the Clinic for

February—Carved Styrofoam Rock Formations. David is also interested in presenting a future clinic using ALLRAIL computer software. He requested me to poll members to see if this is something they would be interested in.

I am looking forward to both clinics; they should be very interesting and informative.

Remember the Company Store will be open for the December meeting. If you have something to sell please bring and add to the collection.

CONTEST

Photo by Bob Weinheimer

There was but one entry in the November contest but it sure was a nice one by Paul Lapointe. Paul tells us the free-lance doodlebug was kit-bashed from a Roundhouse Overton combine and a coach car to give the proper length and window arrangement. The “cow catcher” was scratch built from styrene and a scale-sized dummy coupler was added. Roof detail includes a “jewel” headlight, and a horn and bell taken from an old GP-9 shell. An equipment box on the roof was built from panels cut out

of the GP-9 shell. The motor and trucks are from a Bachmann Brill trolley.

The contest for December isn't really a contest, it's more of a Celebration of Models to borrow from the NMRA's Convention. The Square Foot of Foam entries will be available to look at. Modelers will be given the opportunity to tell us about their entries. There will be no voting, just a celebration of all the fine work done by our Division members.



2018 Elections

Bill Wadsworth, Elections Manager

This may seem early to some, but we need to be thinking about who our officers are for the next term. According to our Constitution we need at least one candidate each for Superintendent and Assistant Superintendent in the election. The candidates are to be reported at the January meeting at which time nominations can be made from the floor. The ballots are then prepared and mailed out to the members, and must be returned by the March meeting. (For 2018 this is March 10.)

If you know of someone who is willing to serve in one of these positions, please contact me at nominating@coaldivision.org or at the December or January meeting.

Library Corner

Bill Wadsworth

Our Division library was increased by quite a few DVDs at our October meeting by the contribution from Gary Burdette's estate. Most of the DVDs are from the Model Railroader's "Dream – Plan - Build" series, containing a wide range of subjects. I plan to have a listing available at the December meeting along with all the DVDs we now have. If you're having any problems or need advice on a particular aspect of our hobby I'm sure you can find help in our library.

As always, any suggestions or donations are welcome.

MY WORD

Bob Weinheimer, Editor

No sooner had I put Bob Osburn's column into this newsletter I saw the lead editorial in the December issue of Model Railroad Hobbyist. The editor speaks of three levels of model railroading and the personal growth that accompanies those levels. The approach is from a different direction but the end result is the same. Check it out for yourself at www.mrhmag.com.

It's late November as I write this but it is now less than six months until the Mid Central Region convention. This one promises to be a memorable experience. The Cincinnati area is a true hotbed of model railroading and there will be more layouts than you can possibly visit but you will see only good ones. The clinic schedule is taking shape and one of the events will be an opportunity to meet with NMRA leadership. This was originally suggested as a "Meet the MCR President" event but NMRA President Charlie Getz, NMRA Vice President for Special Projects Gerry Leone, NMRA Chief Financial Officer Frank Koch, and NMRA Director Mike Brestel will be a part of the event. Yes, I will be part of it as well. There may be one more if that isn't enough. What does this mean? If you have ever wanted to talk to the highest lev-

els of leadership in the NMRA, this is your chance. Ask Charlie, Gerry, Frank, and Mike all the questions that have been bothering you. I'm sure they will give you straight answers. All of these gentlemen are very approachable and will welcome the opportunity to meet you.

You can learn more about the convention at www.cincy-div7.org/convention.html. Check back frequently for updates. Also, the convention issue of the MCR newsletter the Kingpin will have full details. Register early (before the newsletter comes out in late December) and you have a higher priority at getting the operating sessions and tours you want. Also, the convention hotels sometimes fill up, make your hotel reservation early as well.

Don't worry if you thought you were in a time warp when you read Dan's report, he was far too efficient and got his article written before he left on a Thanksgiving trip. I think all the other contributors were also still thinking turkey but this is the December issue and the best of the season is wished for all of you. Merry Christmas and Happy New Year.

NMRA MODEL RAILROAD DIRECTORY

The new NMRA Model Railroad Directory is now online and ready to use!

Now whether you are at home or traveling, you can contact other NMRA members for a layout tour, to talk trains, or even to join in an op session! There are maps, descriptions, photos, videos, and more. And it's only available to NMRA members.

Visit www.nmra.org then click on "Member Home" then "Model RR Directory" to see layouts in your area or to list your own layout (as long as it's an operating home or garden railroad. Join in the fun!)



Editor's note: The Pennsylvania Southern is listed in this directory. Please remember that you must be an NMRA member to use the Directory and that you need to register to use the site if you have not done so already. Here's the link: www.nmra.org/members/layout-directory. I tried to copy part of the site but the nice map with all the layout locations doesn't copy at all, you have to go there yourself to see it.

OR SEE THE DECEMBER NMRA MAGAZINE FOR AN ARTICLE WITH SCREEN SHOTS SHOWING WHAT THIS IS ALL ABOUT AND HOW TO ACCESS IT.



Welcome Back! **May 17-20, 2018**

*Our first convention since
the 2005 NMRA National*



We've prepared tons of fun for everyone!

Abundant Premier Layouts!



Special Thurs Afternoon Early-Bird Layout
Open Houses - *Bob Lawson* and *Larry Bonhaus*!
Layout Tours & Operating Sessions All 4 Days!
Special *EnterTrainment Junction* Events!



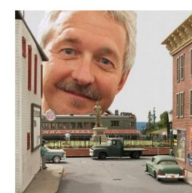
Awesome Commercial Bus Tours!

Fantastic Rail Industry Prototype Tours
Fabulous General Interest Tours
4 'Great Model Railroad' Mini-bus Tours (12 layouts)!



Numerous Rail and Non-Rail Clinics

Special Guests *Gerry Leone*, *Lou Sassi* and
Hal Miller, Editor of *Model Railroader*!
Non-Rail Luncheon and Saturday Banquet



Plentiful Additional In-Hotel Attractions

Extra Large White Elephant Sale!
Model, Photo and Crafts Contests
Raffle, Company Store, Hospitality Room
Layouts at Hotel + *EnterTrainment Junction*
Special *TCS Booth* with *Loco Sound Free Installs*!

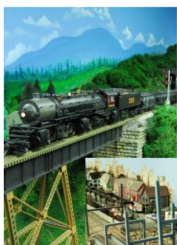


Register Now for Priority on Extra Fares & Ops

See form at our booth or www.cincy-div7.org

Abundant Layout Events

67 layouts, 30 published, 10 in GMR, 5 at EJ
Bob Lawson and *Larry Bonhaus* on Thurs Aft
 Great Model RR Tours + Hotel, EJ Layouts,
 Operating Sessions, Layout Open Houses



Fantastic Rail Industry Tours

Matandy Steel

Cincinnati Barge & Rail Terminal

Excel Logistics Tropicana

Enerfab Brighton Tru-Edge

Deluxe Cincinnati Railfanning



Fabulous Non-Rail Activities

Findlay Market & Conservatory Tour
 Am. Sign Museum & Spring Grove Tour
 Luncheon with Cookie Decorating Chef
 Genealogy & Greeting Card Clinics
 Meet & Greet w/ Wine Tasting
 Water Aerobics Class



Wonderful Newly Remodeled Hotel

Cincinnati Marriott North (513) 874-7335

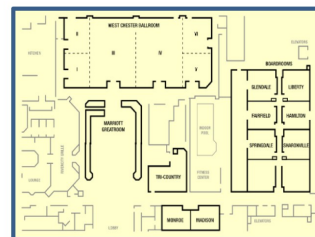
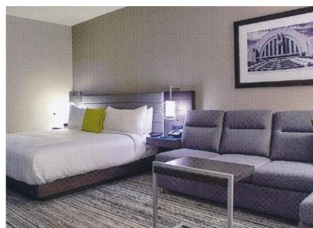
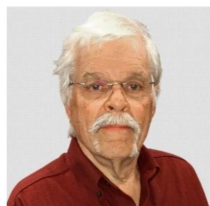
I-75 & Union Center Blvd, West Chester, Ohio

\$109 King Bed, \$119 Two Double Beds, Pre-Tax

Use code: "National Model Railroad Assoc."

Great Guest Speakers

Gerry Leone, Allen McClelland,
 Lou Sassi, Hal Miller, Steve King,
 Rick Tipton, Charlie Getz ...



Low Cost Registration Fees

Only \$75 Rail, \$25 Family (Spouse/Teen), Kids under 13 Free w/ Reg. Adult
 Register Now for Extra Fares & Ops Priorities - See form or www.cincy-div7.org



Midland Atlantic
Anthony Parrish, CEO
 tony765@aol.com

NORFOLK AND WESTERN



**PIPESTEM BASEMENT
 DIVISION (HO)**
DAN MULHEARN
 304-466-9188
 danmulhearn@gmail.com



**CRUSTY
 MOUNTAIN
 AND
 WILOBY
 SPRINGS R.R.**

Mark Maynard, President
 Portsmouth, OH



Jerry Doyle, President
 Barboursville, WV

CRESCENT VALLEY



**THREE ARROWS
 RAILROAD**

Tony Puccini, President
 6 Garwood Drive Huntington, WV 25705
 puccinibaj@hotmail.com

**PENNSYLVANIA
 SOUTHERN**

Bob Weinheimer, President
 398 Mount View Drive Charleston, WV 25314
 www.pennsylvaniasouthern.com



LAKESIDE LINES RAILROAD

Thomas K. Harris, President and CEO

274 S. Wye Rd., Wytheville, VA 24382
 tharris@va.net

(276)620-3493
 www.lakesidelines.com



Ed Keith, MMR
 Assistant Superintendent
 Chesapeake, OH



SHAMOKIN DIVISION
 DENNIS MCGEENEY ROAD FOREMAN
 SUMMERSVILLE, WV
 304-872-7262



HINTON DIVISION
Gary Burdette - Superintendent
 Point Pleasant WV



WESTERN MARYLAND RAILWAY
THOMAS SUBDIVISION
RUSSEL MILLER - SUPERINTENDENT
 RUSSEL22@MSN.COM



**NEW RIVER GORGE
 SUBDIVISION**
 Clint Foster Superintendant
 Ronceverte WV

Alleghany & New River Road
 An Appalachian Coal Hauling Railroad set in the 50's



Bringing a little bit of West Virginia to the rest of America
 a few tons at a time



John Harris, Chief Engineer
 AandNRR@aol.com

Western West Virginian



With Connections to the
 B&O, C&O, Western Maryland,
 West Virginia Northern

Woody Higginbotham - Superintendant



ROBERT WEINHEIMER MMR
398 MOUNT VIEW DR
CHARLESTON WV
25314-1041

Upcoming Coal Division Events

If you received this news-
letter via the US Postal
Service and have an email
address, please let us
know so we can save
printing and postage
costs. Send a note to
editor@coaldivision.org
to get onto the email dis-
tribution list for Up The
Holler.

**December 9
St. Albans Depot**

**January 13, 2018
St. Albans Depot**

**February 10
St. Albans Depot**

**March 10
St. Albans Depot**